

solute

EVE

Enhanced  
Virtual  
Environments

# EVE, we bring the real world to virtual reality

- Accurate measurement of spaces and objects*
- Personalised and immersive experience*
- Real-time database connection*
- Minimises risks and accidents*
- Material available 24/7*
- Automatic evaluations*
- Reduce time and costs*
- Interactive learning*
- Learning by doing*

Incorporate the latest trends in virtualisation into your business. EVE has a wide range of services applicable to a multitude of sectors, from virtual reality simulators for training, through environments and objects 3D scanning, to procedures virtualisation.

All these solutions and many more completely customised for your company. Discover all the services offered by EVE.

**EVE**  
SCAN

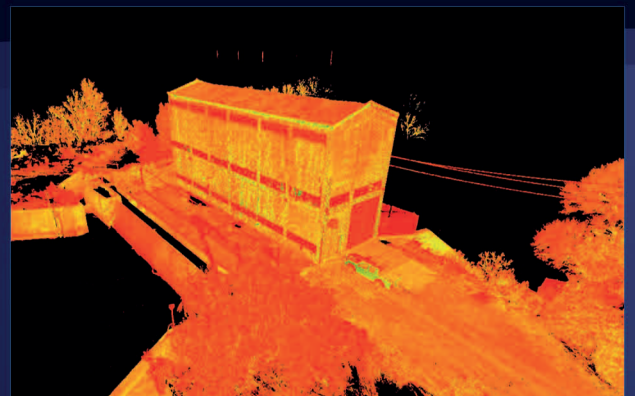
We have two types of scanning:

**Component scanning:** Incorporation of real objects into the virtual world making a scan of the object that will be exported to CAD. It is ideal for reverse engineering and metrology. It allows detailed information to be obtained on discontinued components.

**360° scanning:** Scanning of spaces that are exported as point clouds and 360° photos. Allows measurement of spaces and creation of 3D models for later use in applications.

**EVE**  
DATA MANAGEMENT

We obtain collections of spatial data by scanning that allow us to create geometric reproductions and digital twins of industrial assets. This procedure is applicable to BIM processes, virtual replicas for property valuation, virtual tours and the creation of simulators for training purposes.



# A solution for any device

EVE adapts to computer, tablet, web applications or VR glasses depending on the consumer's needs. It can be hosted on SOLUTE's servers or the client's own.

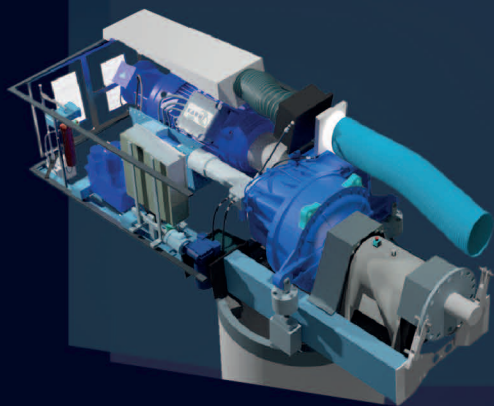


## EVE VIRTUAL TOURS

We create interactive experiences that allow the user to observe the distance and proportions of a space. We generate personalised virtual tours that can include videos, narrations, photographs, 3D objects, educational content, etc.



## EVE VIRTUAL REALITY



EVE allows environments and situations to be replicated through virtual simulators in the most realistic way possible. Digital replicas of the geometries of each component and object in the environment are generated based on the complete point cloud and the 3D spherical photos already taken.

Thanks to total immersion through VR, the learner carries out different tasks, tests their response to emergency situations and repeats procedures as many times as necessary and at any time anywhere.



## EVE VIRTUAL PROCEDURES



EVE makes it possible to replicate a procedure artificially. Through a succession of steps, by means of an animation, we explain in detail how to carry out an operation. These guides are very useful both in training and in operation, being able to describe to an operator a complete procedure in an exhaustive way.



## EVE R & D

EVE is in a permanent process of innovation. It is currently working on several projects aimed at reducing development times, immersive experiences through 3D sound and haptic devices, creation of wearable devices to measure constants, scenario evaluator through AI, etc.



# Applications of virtualisation and digitalisation services

## *Industry*

Instruction in environments that are difficult to access, highly dangerous or unbuilt prototypes to execute safety protocols.

## *Digital twin*

Creation of digital twins to study an object behaviour under different conditions.

## *Prototyping and product development*

Objects scanning for reverse engineering, product development or analysis of discontinued components.

## *Architecture*

Spaces scanning for BIM processes or large spaces precise measurement.

## *Real estate*

Carrying out spaces' virtual visits and scanning for real estate's valuation or marketing.

## *Medicine*

Training of healthcare personnel with simulations of real procedures and situations. Didactic material with 3D objects.

## *Education*

Immersive practice of procedures, repetitions and evaluations.

## *Tourism and travel*

Virtual tours of tourist destinations for commercial purposes as well as hotels, restaurants and entertainment venues.

## *Culture and art*

Immersive virtual tours of museums and galleries with embedded information.

# solute

[www.solute.es](http://www.solute.es)

## *Headquarters*

Avenida Cerro del Águila, 3  
28703 San Sebastián de los Reyes  
Madrid - Spain

tf +34 91 658 8204  
fx +34 91 652 5181

## *Regional Offices*

Ctra. de l'Hospitalet, 147  
Edificio Lisboa 3ªA  
08940 Cornellà de Llobregat  
Barcelona - Spain

tf +34 93 707 0690

Avenida de la Investigación, s/n  
Edificio PCTEX  
06006 Badajoz - Spain

tf +34 608 818 500

Dinamarca, 4  
Vivero de Empresas  
45005 Toledo - Spain

tf +34 689 321 388

